

FOR SALE | \$1,200,000.⁰⁰



2.27 Acres

22009 NE 67TH AVE. | RIDGEFIELD, WA 98642

**BARE LAND DESIGNED FOR RV STORAGE YARD.
ALL FENCED WITH ELECTRIC GATE.**

Kelly Shea

Commercial/Industrial Specialist

Direct: 360.823.5110

Cell: 360.921.3710

Email: Kelly@SheaCRE.com

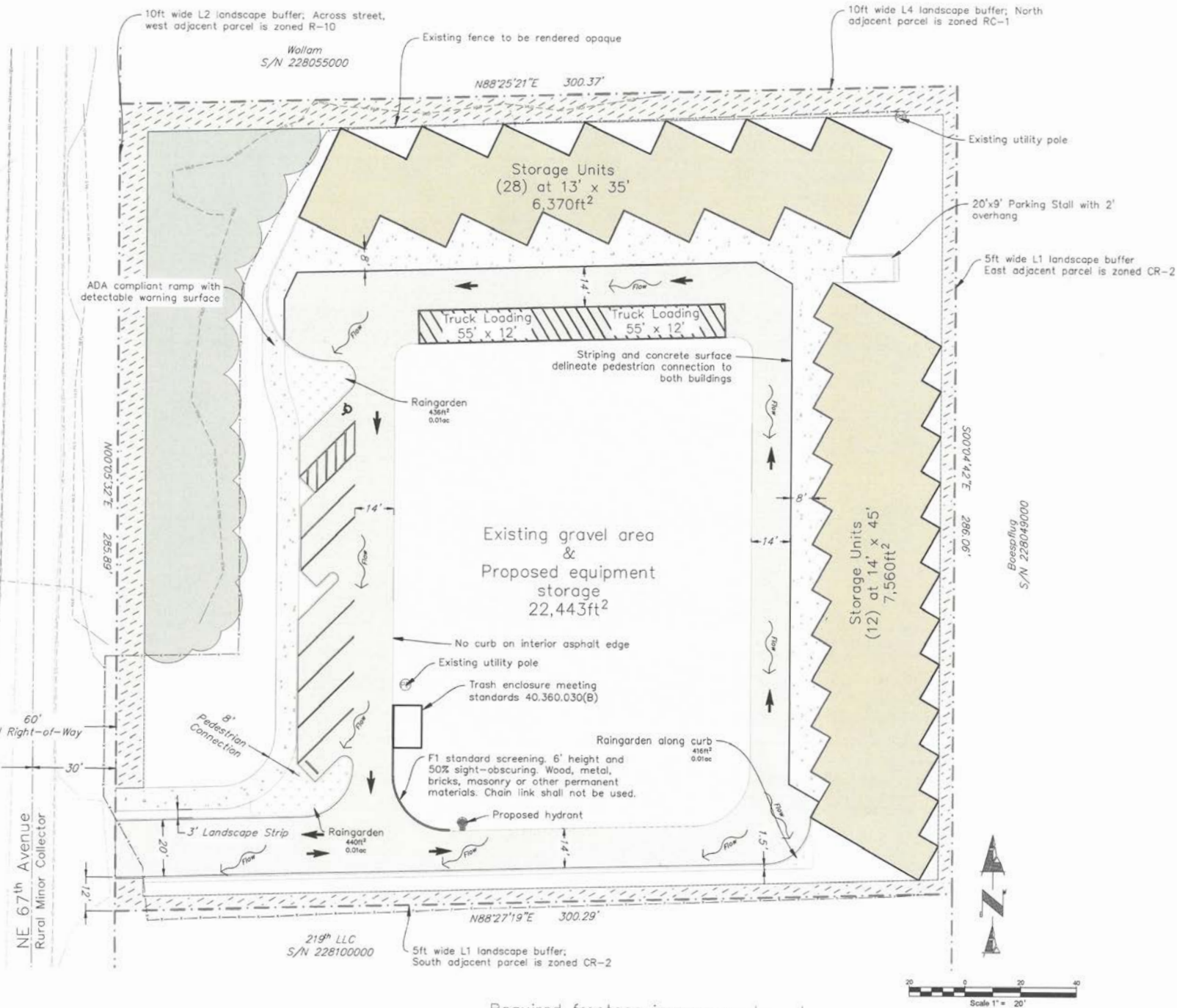


**MAJ COMMERCIAL
REAL ESTATE**

300 W 15th St., Ste 201 | Vancouver, WA 98660

WHILE THE INFORMATION CONTAINED HEREIN IS FROM SOURCES DEEMED RELIABLE, IT HAS NOT BEEN INDEPENDENTLY VERIFIED BY THE MAJ COMMERCIAL REAL ESTATE OR BY BROKER.

PROPOSED SITE PLAN



Existing landscaping and required buffers provide 0.358ac landscaped area, exceeding the 15% site standard.

Required frontage improvements not shown. 20ft half width paving, 8' attached sidewalk connecting to asphalt pathway to the north, and 30ft half right-of-way.

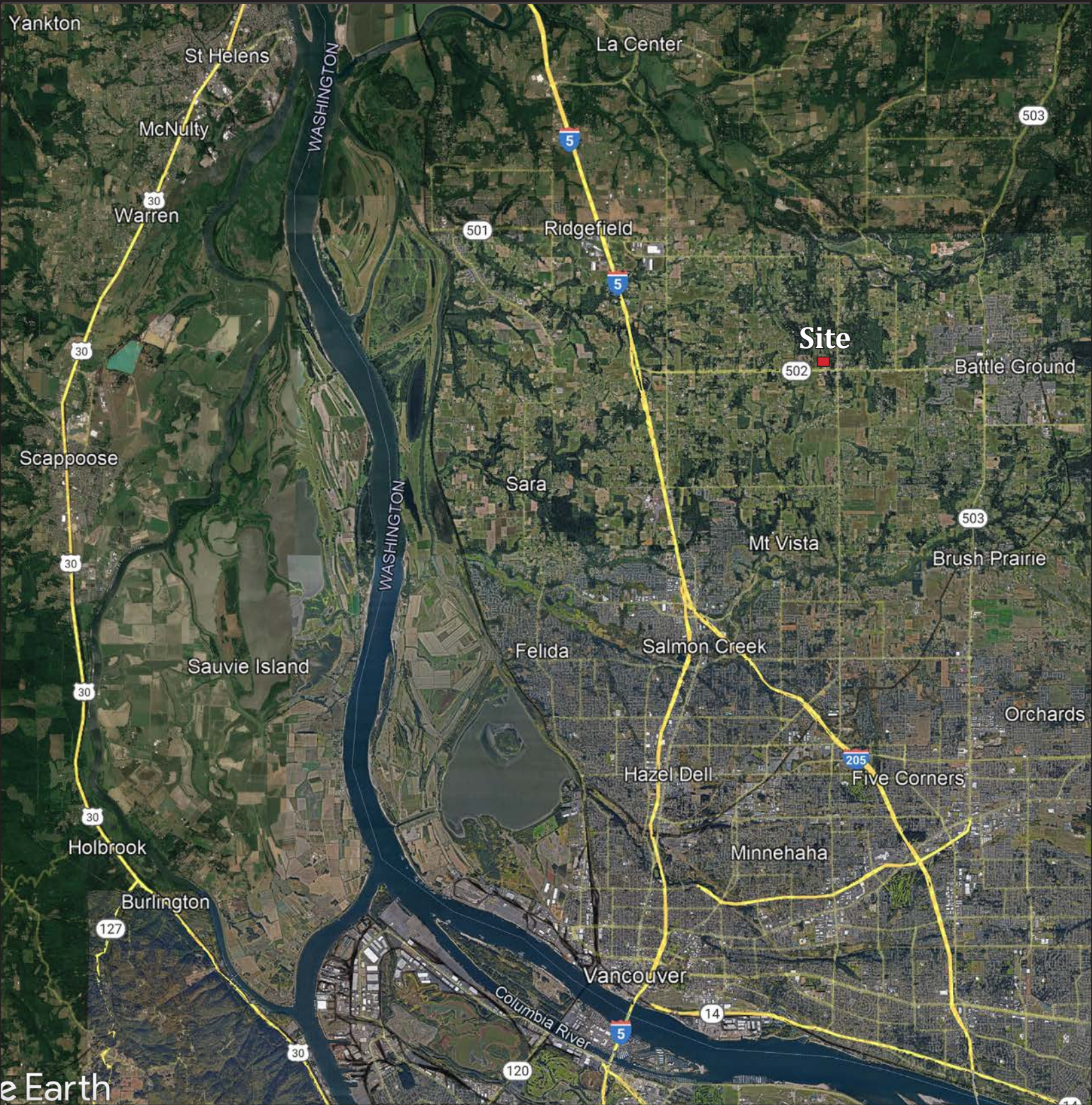
Kelly Shea
Commercial/Industrial Specialist
 Direct: 360.823.5110
 Cell: 360.921.3710
 Email: Kelly@SheaCRE.com



300 W 15th St., Ste 201 | Vancouver, WA 98660

AREA

Located at Dollars Corner. Joins Machinery Business



Kelly Shea

Commercial/Industrial Specialist

Direct: 360.823.5110

Cell: 360.921.3710

Email: Kelly@SheaCRE.com



MAJ COMMERCIAL
REAL ESTATE

300 W 15th St., Ste 201 | Vancouver, WA 98660

WHILE THE INFORMATION CONTAINED HEREIN IS FROM SOURCES DEEMED RELIABLE, IT HAS NOT BEEN INDEPENDENTLY VERIFIED BY THE MAJ COMMERCIAL REAL ESTATE OR BY BROKER.